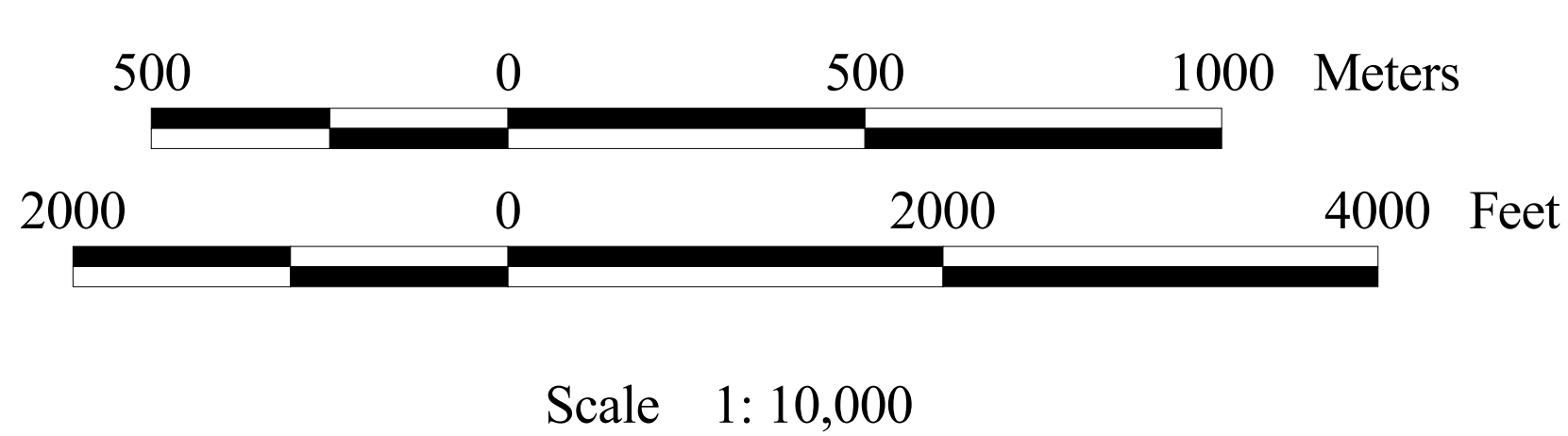
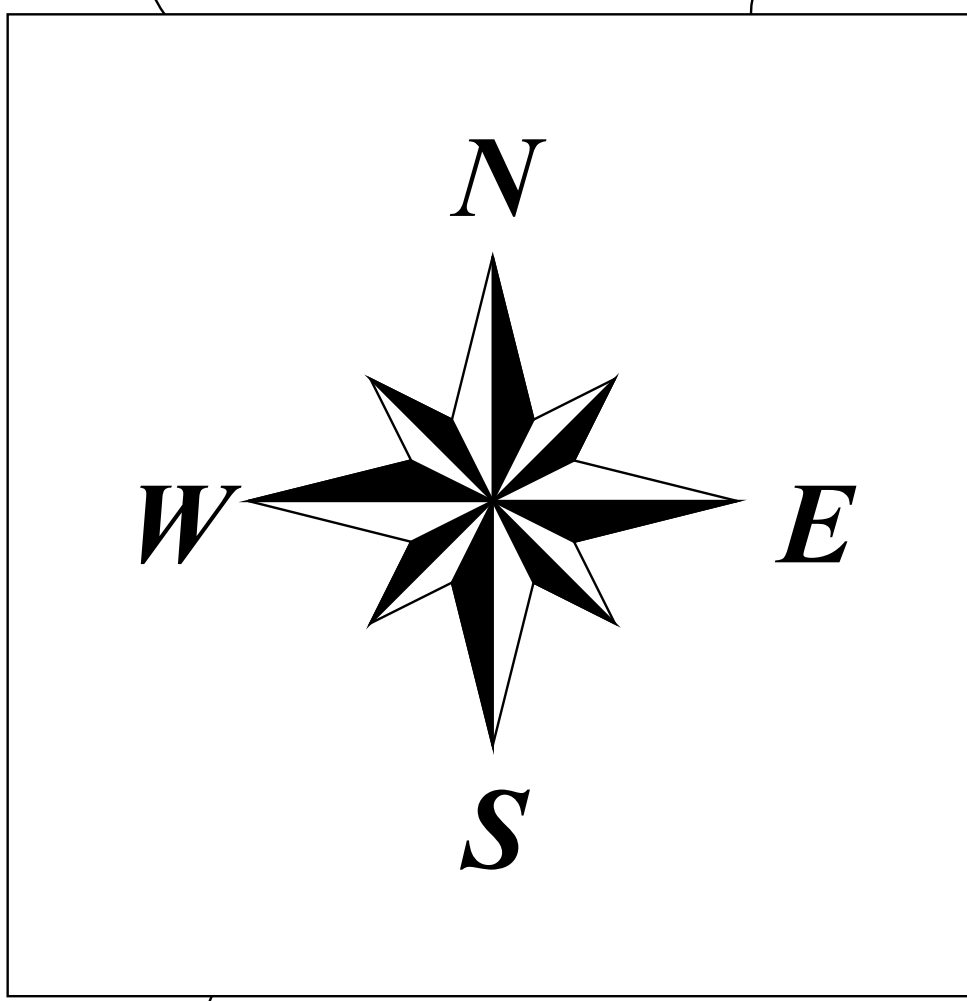
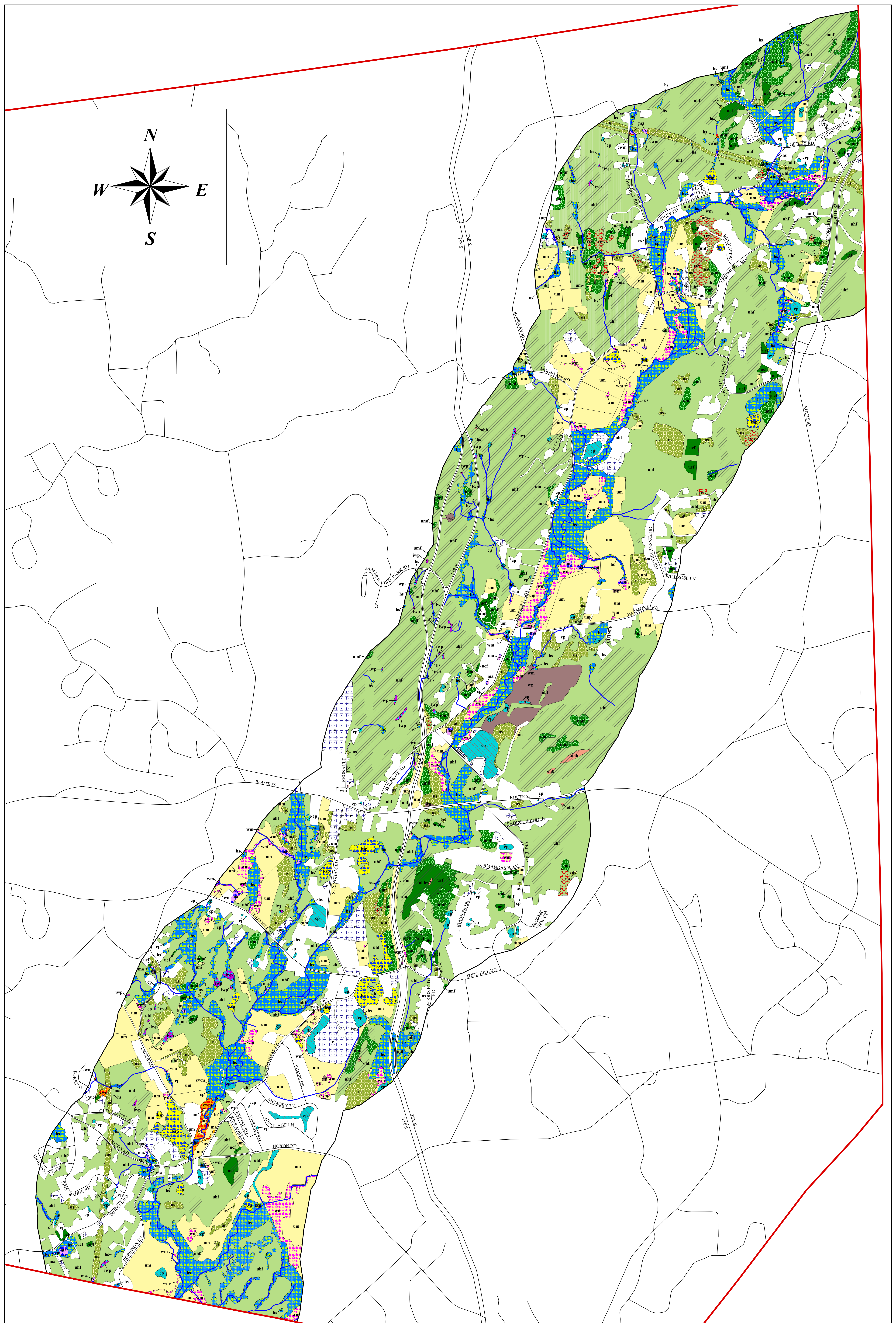


SIGNIFICANT HABITATS IN THE SPROUT CREEK CORRIDOR, TOWN OF LAGRANGE, DUTCHESS COUNTY, NY



Upland Habitats		Wetland and Stream Habitats	
	Upland hardwood forest (uhf)		Hardwood & shrub swamp (hs)
	Upland mixed forest (umf)		Conifer swamp (cs)
	Upland conifer forest (ucf)		Marsh (ma)
	Red cedar woodland (rcw)		Wet meadow (wm)
	Upland shrubland (us)		Calcareous wet meadow (cwm)
	Upland meadow (um)		Intermittent woodland pool (iwp)
	Oak-heath barren (ohb)		Kettle shrub pool (ksp)
	Waste ground (wg)		Open water (ow)
	Cultural (c)		Constructed pond (cp)
	Crest, ledge, & talus		Streams
	Town boundary		Springs & seeps
	Roads		

An Important Caution:
This map is suitable for general land use planning, but is unsuitable for detailed planning and site design or for jurisdictional determinations (e.g. for wetlands). Boundaries of wetlands and other habitats depicted here are only approximate.

Data Sources
Habitats were identified by John Sullivan and Gretchen Stevens through map analysis and aerial photographic interpretation, with field verification of as many locations as practicable. Color infrared aerial photographs in the USGS NAPP series, taken in spring of 1994 and 1995 (scale 1:40,000), were used for stereoscopic photointerpretation. Habitats were digitized onscreen using true color, high resolution, orthophoto images taken in spring 2000 and obtained from the Dutchess County Office of Real Property Tax. The map is in New York State Plane, East, NAD83, units of feet.

A discussion of the mapping methods and ecological significance of each habitat type is given in the accompanying report: Significant Habitats in the Fishkill and Sprout Creek Corridors, Towns of Beekman, LaGrange, and Fishkill, Dutchess County, New York (Sullivan and Stevens 2005).

Road data (road locations and names) were issued by the Dutchess County Office of Emergency Response in January 2001, and were provided to us by the Dutchess County Environmental Management Council.

Equipment and Software
The maps were created using ArcView 3.2a GIS software on a Dell Latitude D600 computer, and printed on a Hewlett Packard DesignJet 800PS plotter.

Funding
Funding for this project was provided to Hudsonia Ltd. by the Hudson River Estuary Program of the New York State Department of Environmental Conservation.

For more information, contact John Sullivan or Gretchen Stevens, Hudsonia Ltd., 845-758-7053.



Hudsonia Ltd.
a nonprofit institute
PO Box 5000
Annandale, NY 12504
www.hudsonia.org