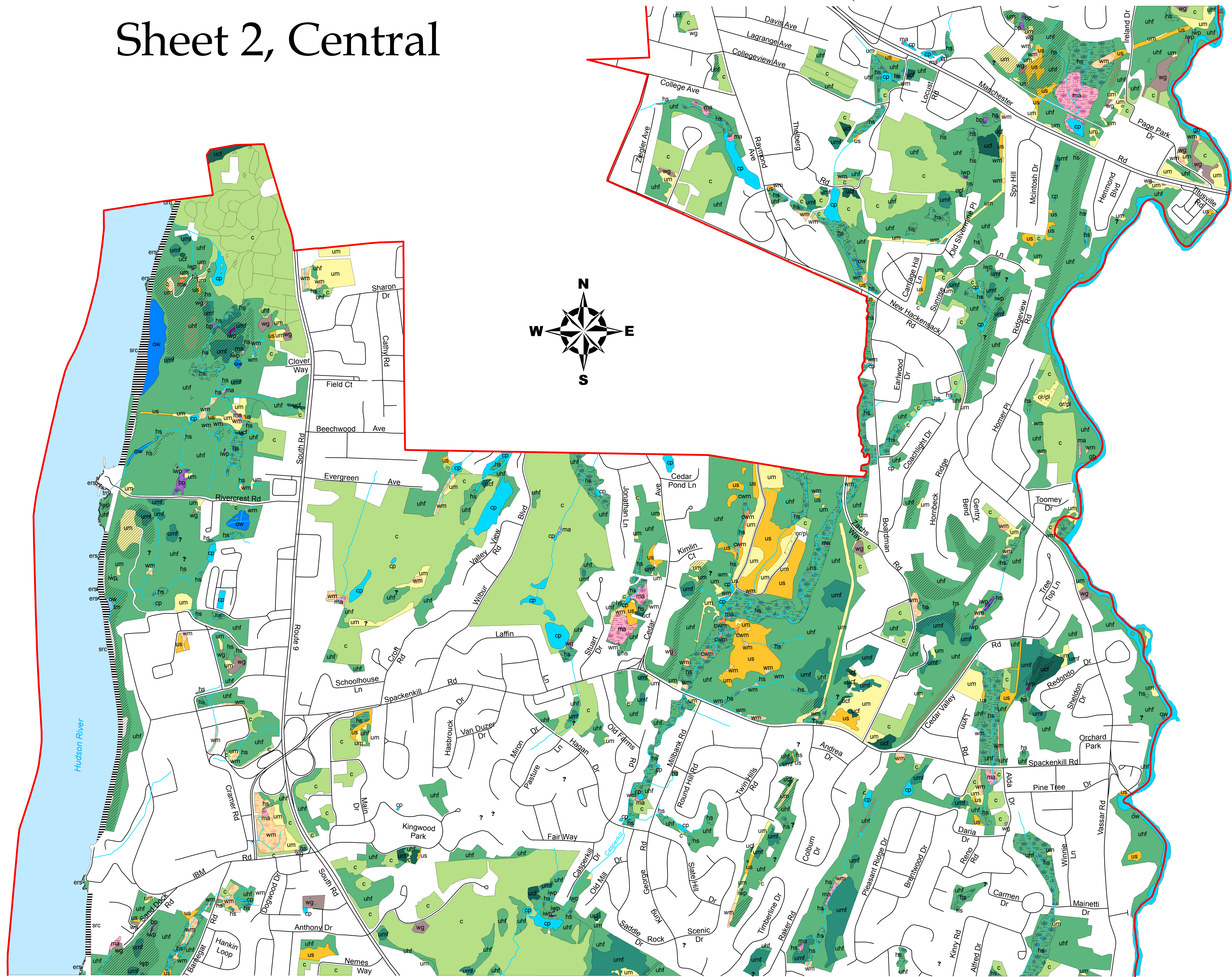


# SIGNIFICANT HABITATS IN THE TOWN OF POUGHKEEPSIE, NY

Sheet 2, Central

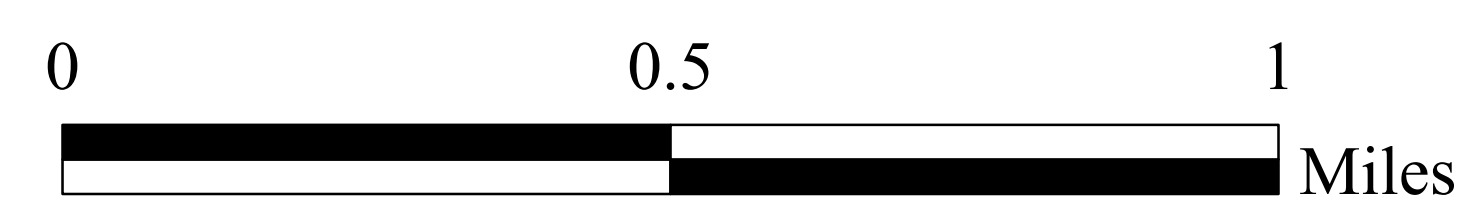
(Continued on Sheet 1)



(Continued on Sheet 3)



SCALE 1:10,000



- Town boundary
- Road
- ? Question
- Developed areas & non-significant habitats

### Upland Habitats

- Upland hardwood forest (uhf)
- Upland mixed forest (umf)
- Upland conifer forest (ucf)
- Red cedar woodland (rcw)
- Upland shrubland (us)
- Upland meadow (um)
- Orchard/plantation (or/pl)
- Cultural (c)
- Waste ground (wg)
- Gravel bar (gb)
- Crest, ledge, and talus
- Calcareous crest, ledge, and talus

### Wetland Habitats

- Hardwood & shrub swamp (hs)
- Intermittent woodland pool (iwp)
- Buttonbush pool (bp)
- Marsh (ma)
- Wet meadow (wm)
- Calcareous wet meadow (cwm)
- Open water (ow)
- Constructed pond (cp)
- Stream
- Seep
- Spring

### Hudson River Habitats

- Freshwater tidal marsh (tm)
- Open water (ow)
- Hudson River
- Estuarine rocky shore (ers)
- Supratidal railroad causeway (src)

Habitats were identified primarily by Nava Tabak through map analysis and aerial photograph interpretation in 2007. As many locations as practicable were field-verified. Color infrared photographs in the USGS NAPP series, taken in spring 1994 (scale 1:40,000), were used for stereoscopic photointerpretation. Habitats were digitized onscreen using infrared orthophoto images taken in spring 2004, obtained from the New York State GIS Clearinghouse. The report prepared in conjunction with these maps (Tabak & Stevens 2008) explains the habitat identification and mapping methods, describes the ecological significance of each habitat type, and offers conservation and management recommendations.

Road locations and names were issued by the Dutchess County Office of Emergency Response in January 2001, were provided to us by the Dutchess County Environmental Management Council, and were modified by us where necessary.

Question marks on the map indicate some areas where a significant habitat different from the mapped habitat may occur but has not been verified by a field visit.

The maps were created using ArcView 9.2 GIS software on a Dell INSPIRON 9400 computer, and printed on a Hewlett Packard DesignJet 800PS plotter.

Funds for this project were provided to Hudsonia Ltd. by grants from the Hudson River Estuary Program of the New York State Department of Environmental Conservation to the Town of Poughkeepsie.

For more information contact Nava Tabak or Kristen Bell, Hudsonia Ltd., 845-758-0600.



Hudsonia Ltd.  
P.O. Box 5000  
Annandale, NY 12504  
www.hudsonia.org

#### An important caution:

This map is suitable for general land-use planning, but is not suitable for detailed planning and site design, or for jurisdictional determinations (e.g., for wetlands). Boundaries of wetlands and other habitats depicted here are only approximate.