

Hudsonia Ltd.

and the

Hudson River Estuary Program  
announce a continuing education opportunity



## A Short Course in Biodiversity Assessment

This three-day intensive course will teach the methods outlined in Hudsonia's *Biodiversity Assessment Manual for the Hudson River Estuary Corridor*. Through hands-on exercises in remote sensing, participants will learn to interpret aerial photos and topographic, geologic, and soils maps to predict the presence of ecologically significant habitats in the landscape. Outdoor exercises will help participants learn field indicators for habitats of conservation concern, including those that may support rare species or provide important ecological services. Discussions of land use planning for biodiversity conservation will cover many issues and scenarios relevant to the work of town agencies, land trusts, and conservation NGOs.

**When?** August 30 – September 1 2011 (approximately 9am-5pm each day)

**Where?** Norrie Point Environmental Center, Staatsburg, Dutchess County, NY

**Who should attend?** Land-use decision makers in the ten-county Hudson River Estuary Corridor are encouraged to participate. Space is limited, and preference will be given to members of town boards, planning boards, conservation commissions, and watershed councils; staff of land trusts; and municipal representatives directly involved in environmental reviews, land use policy-making, and planning.

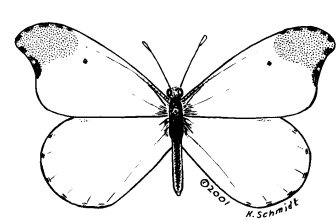
**Registration** Please submit the application form on the reverse to be considered for enrollment in the course. Space is limited; you will be notified if accepted.

**Contact** Gretchen Stevens, Director, Biodiversity Resources Center  
Hudsonia Ltd., 845.758.7024, [stevens@bard.edu](mailto:stevens@bard.edu)

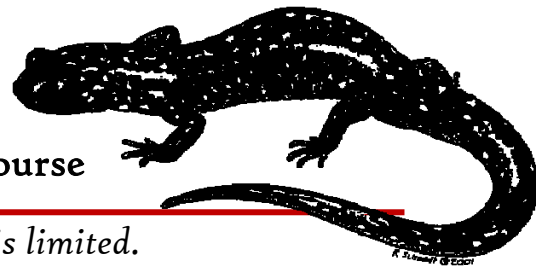


This project is funded by the New York State  
Environmental Protection Fund through the  
Hudson River Estuary Program of the  
New York State Department of Environmental Conservation





# Application Biodiversity Assessment Short Course



*This is a competitive application and space is limited.*

*We expect those who are accepted to participate in the full three days of the course. Applicants will be accepted based on several factors, including the date of submission; early submissions will be favored.*

**All applications must be sent no later than 19 August to:  
Gretchen Stevens, Hudsonia, PO Box 5000, Annandale, NY 12504;  
or fax to 845.758.7033; or email to [stevens@bard.edu](mailto:stevens@bard.edu).**

---

Name: \_\_\_\_\_

Title: \_\_\_\_\_

Agency/Organization: \_\_\_\_\_

Address: \_\_\_\_\_

\_\_\_\_\_

Phone: \_\_\_\_\_ Email: \_\_\_\_\_

Describe any municipal or regional conservation or land use planning efforts in which you are engaged.

Describe how you expect to apply the skills taught in the Short Course.

**The registration fee for the course is \$55.**

**Lunch and other refreshments will be provided.**

*Do not send payment at this time.*

**If selected, you will be notified and an invoice will be sent with your registration information.**