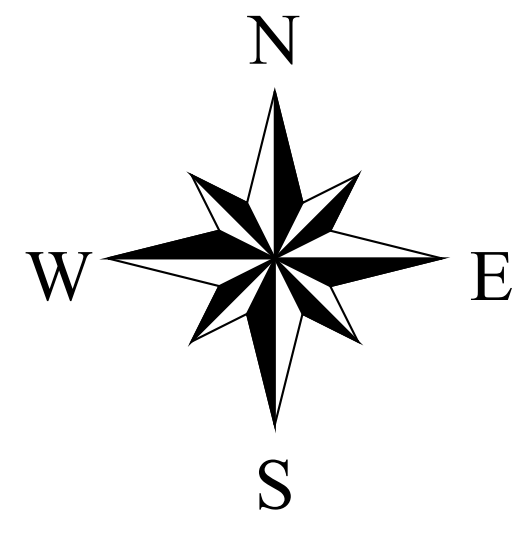


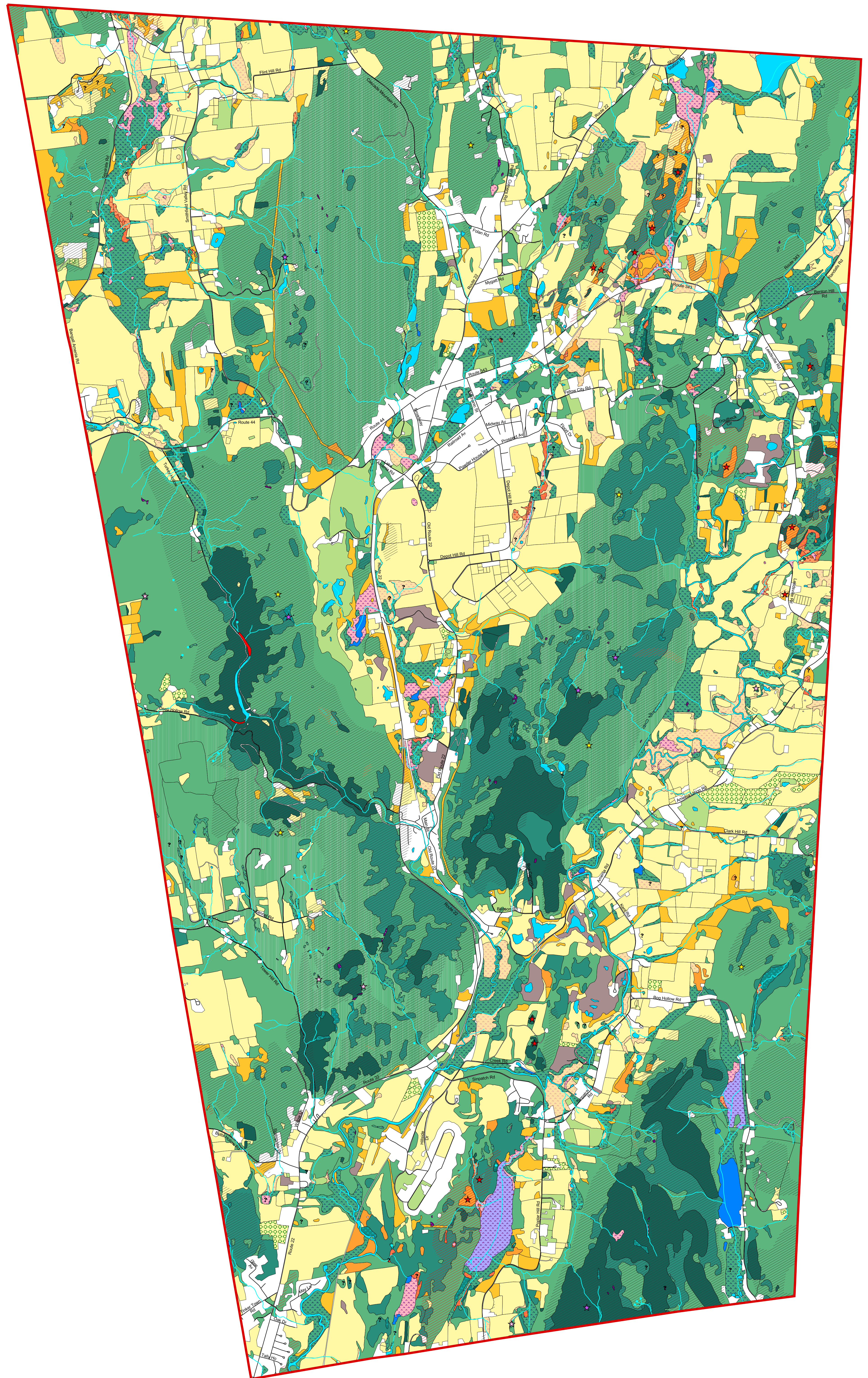
# SIGNIFICANT HABITATS IN THE TOWN OF AMENIA, NY



0 1 2 Kilometers

0 0.5 1 1.5 Miles

SCALE 1:19,000



## LEGEND

- Town boundary
- Road
- Non-significant habitats and developed areas
- ? Questions

## Upland Habitats

- Upland hardwood forest
- Upland mixed forest
- Upland conifer forest
- Cool ravine
- Red cedar woodland
- Upland shrubland
- Upland meadow
- Orchard/plantation
- Cultural
- Waste ground
- Calcareous crest, ledge, and talus
- Crest, ledge, and talus
- Crest oak woodland
- Marble knoll

## Wetland Habitats

- Hardwood & shrub swamp
- Mixed forest swamp
- Conifer swamp
- Marsh
- Wet meadow
- Calcareous wet meadow
- Fen
- Intermittent woodland pool
- Circumneutral bog lake
- Open water
- Constructed pond
- Buttonbush pool
- Heath swamp
- Stream
- Seep
- Spring

### An important caution:

This map is suitable for general land-use planning, but is not suitable for detailed planning and site design, or for jurisdictional determinations (e.g., for wetlands). Boundaries of wetlands and other habitats depicted here are only approximate.



Hudsonia Ltd.  
P.O. Box 5000  
Annandale, NY 12504  
[www.hudsonia.org](http://www.hudsonia.org)

Habitats were identified by Kristen Bell, Nava Tabak, and Gretchen Stevens through map analysis and aerial photograph interpretation. As many locations as practicable were field-verified. Color infrared photographs in the USGS NAPP series, taken in spring 1994 (scale 1:40,000), were used for stereoscopic photointerpretation. Habitats were digitized onscreen using infrared orthophoto images taken in spring 2004, obtained from the New York State GIS Clearinghouse. The report prepared in conjunction with these maps (Tabak et al. 2006) explains the habitat identification and mapping methods in greater detail, describes the ecological significance of each habitat type, and offers conservation and management recommendations.

Road locations and names were issued by the Dutchess County Office of Emergency Response in January 2001, and were provided to us by the Dutchess County Environmental Management Council.

Question marks on the map indicate some areas where a significant habitat may occur but has not been verified by a field visit.

The maps were created using ArcView 3.2 GIS software on a Dell INSPIRON 11150 computer, and printed on a Hewlett Packard DesignJet 800PS plotter.

Funds for this project were provided to Hudsonia Ltd. by the Millbrook Tribute Garden (through the Dutchess Land Conservancy) and the Dyson Foundation.

For more information contact Kristen Bell or Nava Tabak, Hudsonia Ltd., 845-758-0600.