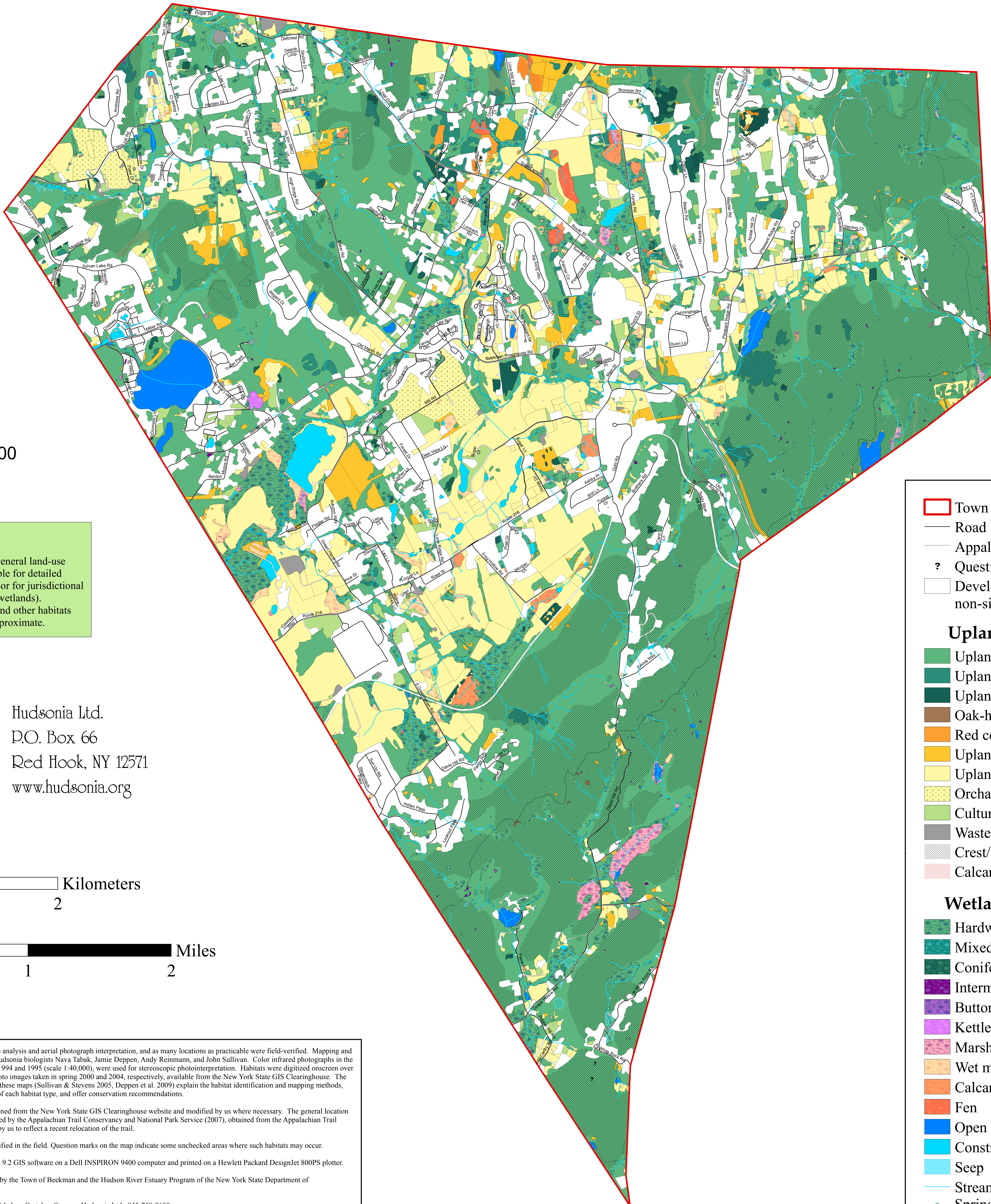
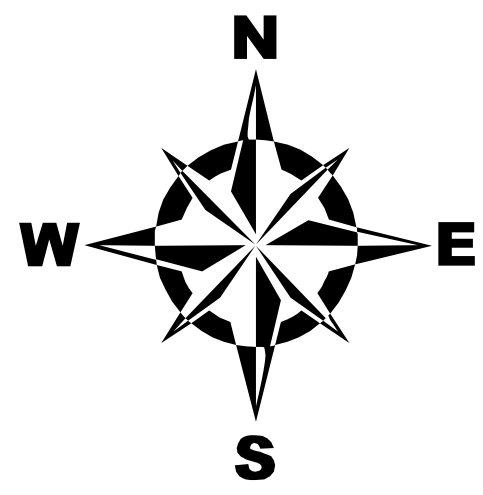


SIGNIFICANT HABITATS IN THE TOWN OF BEEKMAN, NY



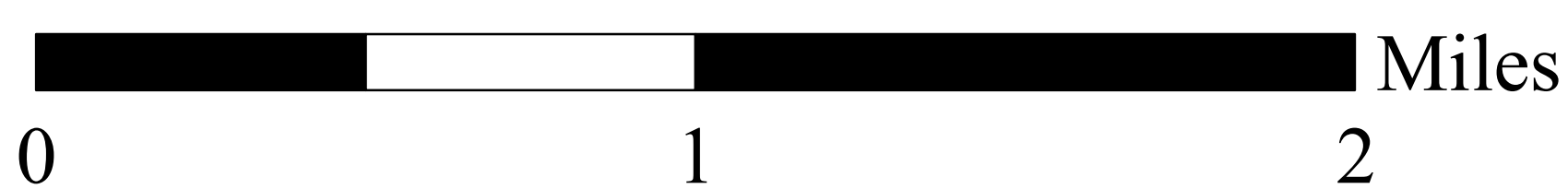
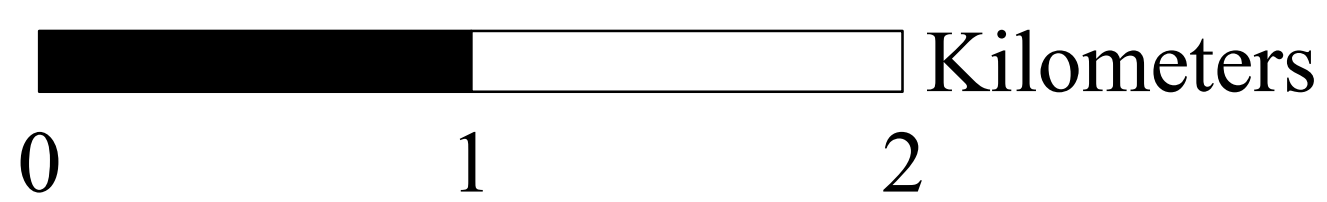
SCALE 1:17,500

An important caution:

This map is suitable for general land-use planning, but is not suitable for detailed planning and site design, or for jurisdictional determinations (e.g., for wetlands). Boundaries of wetlands and other habitats depicted here are only approximate.



Hudsonia Ltd.
P.O. Box 66
Red Hook, NY 12571
www.hudsonia.org



Habitats were identified through map analysis and aerial photograph interpretation, and as many locations as practicable were field-verified. Mapping and field work were done primarily by Hudsonia biologists Nava Tabak, Jamie Deppen, Andy Reinmann, and John Sullivan. Color infrared photographs in the USGS NAPP series, taken in spring 1994 and 1995 (scale 1:40,000), were used for stereoscopic photointerpretation. Habitats were digitized onscreen over true color and color infrared orthophoto images taken in spring 2000 and 2004, respectively, available from the New York State GIS Clearinghouse. The reports prepared in conjunction with these maps (Sullivan & Stevens 2005, Deppen et al. 2009) explain the habitat identification and mapping methods, describe the ecological significance of each habitat type, and offer conservation recommendations.

Road locations and names were obtained from the New York State GIS Clearinghouse website and modified by us where necessary. The general location of the Appalachian Trail was published by the Appalachian Trail Conservancy and National Park Service (2007), obtained from the Appalachian Trail Conservancy website, and modified by us to reflect a recent relocation of the trail.

Some habitat types can only be identified in the field. Question marks on the map indicate some unchecked areas where such habitats may occur.

This map was created using ArcView 9.2 GIS software on a Dell INSPIRON 9400 computer and printed on a Hewlett Packard DesignJet 800PS plotter.

Funds for this project were provided by the Town of Beekman and the Hudson River Estuary Program of the New York State Department of Environmental Conservation.

For more information contact Nava Tabak or Gretchen Stevens, Hudsonia Ltd., 845-758-0600.

- Town boundary
 - Road
 - Appalachian Trail
 - ? Question
 - Developed areas & non-significant habitats
- Upland Habitats**
- Upland hardwood forest
 - Upland mixed forest
 - Upland conifer forest
 - Oak-heath barren
 - Red cedar woodland
 - Upland shrubland
 - Upland meadow
 - Orchard/plantation
 - Cultural
 - Waste ground
 - Crest/ledge/talus
 - Calcareous crest/ledge/talus
- Wetland Habitats**
- Hardwood & shrub swamp
 - Mixed forest swamp
 - Conifer swamp
 - Intermittent woodland pool
 - Buttonbush pool
 - Kettle shrub pool
 - Marsh
 - Wet meadow
 - Calcareous wet meadow
 - Fen
 - Open water
 - Constructed pond
 - Seep
 - Stream
 - Spring