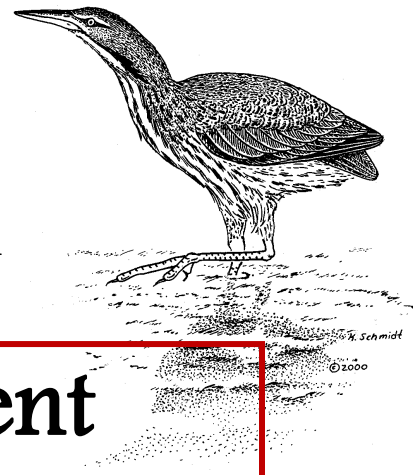




Hudsonia Ltd.
and the
Hudson River Estuary Program
announce



Biodiversity Assessment 1-day workshops

What? In these workshops, Hudsonia biologists will lead hands-on exercises in analyzing topographic maps, geology maps, soil surveys, and aerial photos to predict the occurrence of ecologically significant habitats in the landscape, and will introduce principles of biodiversity conservation that can be applied to townwide planning and to site-specific environmental reviews of development projects. Discussions of land use planning for biodiversity conservation will cover many issues and scenarios relevant to the work of town agencies, land trusts, and conservation NGOs.

Who should attend? Land-use decision makers in the ten-county Hudson River Estuary Corridor are encouraged to participate. Space is limited, and preference will be given to members of town boards, planning boards, conservation commissions, and watershed councils; staff of land trusts; and municipal representatives directly involved in environmental reviews, land use policy-making, and planning.

Opportunities at three locations:

- **Saturday, November 17**, Five Rivers Environmental Education Center, Albany County
- **Friday, November 30**, Olana State Historic Site, Columbia County
- **Friday, December 14**, Agroforestry Resource Center, Greene County

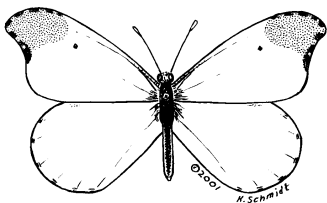
Registration Please submit the application form on the reverse to be considered for enrollment in the workshop. Space is limited; you will be notified if accepted.

Contact Kelly Farrell, Biologist, Biodiversity Resources Center
Hudsonia Ltd., 845.758.7053, kfarrell@bard.edu

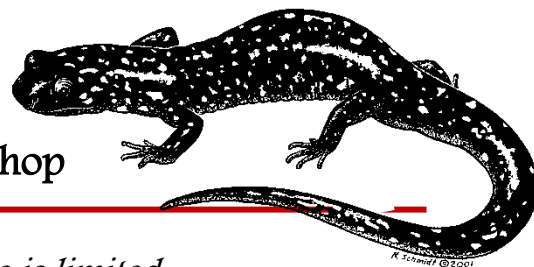


This project is funded by the New York State
Environmental Protection Fund through the
Hudson River Estuary Program of the
New York State Department of Environmental Conservation





Application Biodiversity Assessment Workshop



*This is a competitive application and space is limited.
Applicants will be accepted based on several factors, including the date of submission;
early submissions will be favored.*

Send applications to:
Kelly Farrell, Hudsonia, PO Box 5000, Annandale, NY 12504;
or fax to 845.758.7033; or email to kfarrell@bard.edu.

Name: _____

Title: _____

Agency/Organization: _____

Address: _____

Phone: _____ Email: _____

Workshop choice (date/location): _____

(if more than one workshop would fit your schedule, please rank them in order of preference)

Describe any municipal or regional conservation or land use planning efforts in which you are engaged.

Describe how you expect to apply the skills taught in the workshop.

This program is provided free-of-charge to registered participants.
Lunch and other refreshments will be provided.

If you are selected, we will send notification and further information about the workshop.
